



"FromTo" Series

Special additives for coating powders



Information:

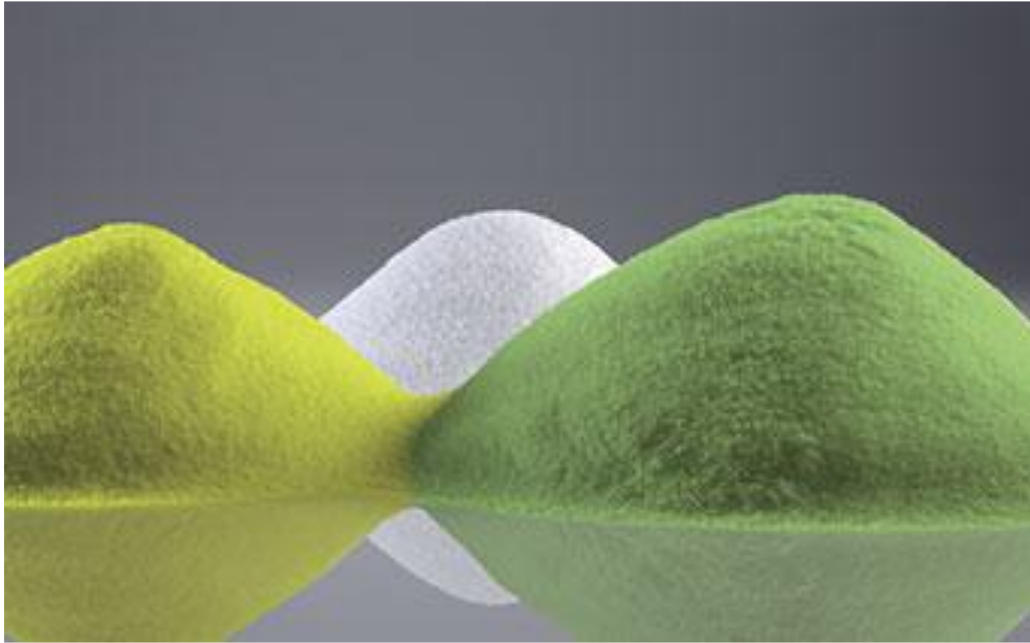
- 1. PRODUCT FEATURES**
- 2. TECHNICAL INFORMATION**
- 3. VARIANTS**
- 4. AVAILABLE BOXES**

“*FromTo*” SERIES

Special Additives for coating powders

1. PRODUCT FEATURES

The products of “*FromTo*” series make it possible to achieve **different surface effects** while keeping the **same colour**, by using a standard glossy GiColor powder. We can therefore obtain an embossed, textured or smooth matt effect.



2. TECHNICAL INFORMATION

The additives of “*FromTo*” series:

- **DO NOT CHANGE** the chemical nature of the powder;
- **DO NOT CHANGE** the curing time;
- **DO NOT CHANGE** the final colour.

The curing temperature and application method referred to are those of the starting powder and are reported in the technical data sheet.

The products of “*FromTo*” series are dry additives mixed with the selected powder (dry blend process); any white dots are indicative of the presence of the additive.

“FromTo” SERIES

Special Additives for coating powders

3. VARIANTS

Each special additive of “FromTo” series allows for different surface effects, starting from a standard GiColor powder; the following additives can be added to a GiColor standard glossy powder:

MP49500 to obtain an **Embossed Effect**

MP49501 to obtain a **Textured Effect**

MP49502 to obtain a **Smooth Matt Effect**

To achieve the desired effect, the following quantities of additive must be added to the powder:

MP49500 (EMBOSSSED EFFECT)	MP49501 (TEXTURED EFFECT)	MP49502 (SMOOTH MATT EFFECT)
98gr of powder + 2gr of MP49500	90gr of powder + 10gr of MP49501	80gr of powder + 20gr of MP49502
2% of additive	10% of additive	20% of additive

N.B. – The percentages here above indicated are to be considered as the minimum required to obtain the desired surface effect.

Once the product has been added, the blending process can be made manually or using a mixer; the longer the product is mixed, the more uniform it will appear at the end.

“FromTo” SERIES

Special Additives for coating powders

Here below we can see some real examples of the surface effects obtained by using our special additives.

- **ADDITIVE MP49500 – EMBOSSED EFFECT**

By adding 2% of additive MP49500 (compared to the quantity of paint product), we will obtain a final product with the **same gloss** but a different surface effect.



Figure 1 – Embossed Effect

“FromTo” SERIES

Special Additives for coating powders

- **ADDITIVE MP49501 – TEXTURED EFFECT**

By adding 10% of additive MP49501 (compared to the quantity of paint product), we will obtain a final product with a gloss under 10-units and a textured surface effect.



Figure 2 – Textured Effect

N.B. – The difference in colour between the two surface effects is wrongly perceived and is due to the **gloss reduction** which affects the **colour perception** by the human eye.



Figure 3 – Initial gloss value



Figure 4 - Final gloss value

“FromTo” SERIES

Special Additives for coating powders

- **ADDITIVE MP49502 – SMOOTH MATT EFFECT**

By adding 20% of additive MP49502 (compared to the quantity of paint product), we will obtain a final product with the **SAME** surface effect but half of its initial gloss.

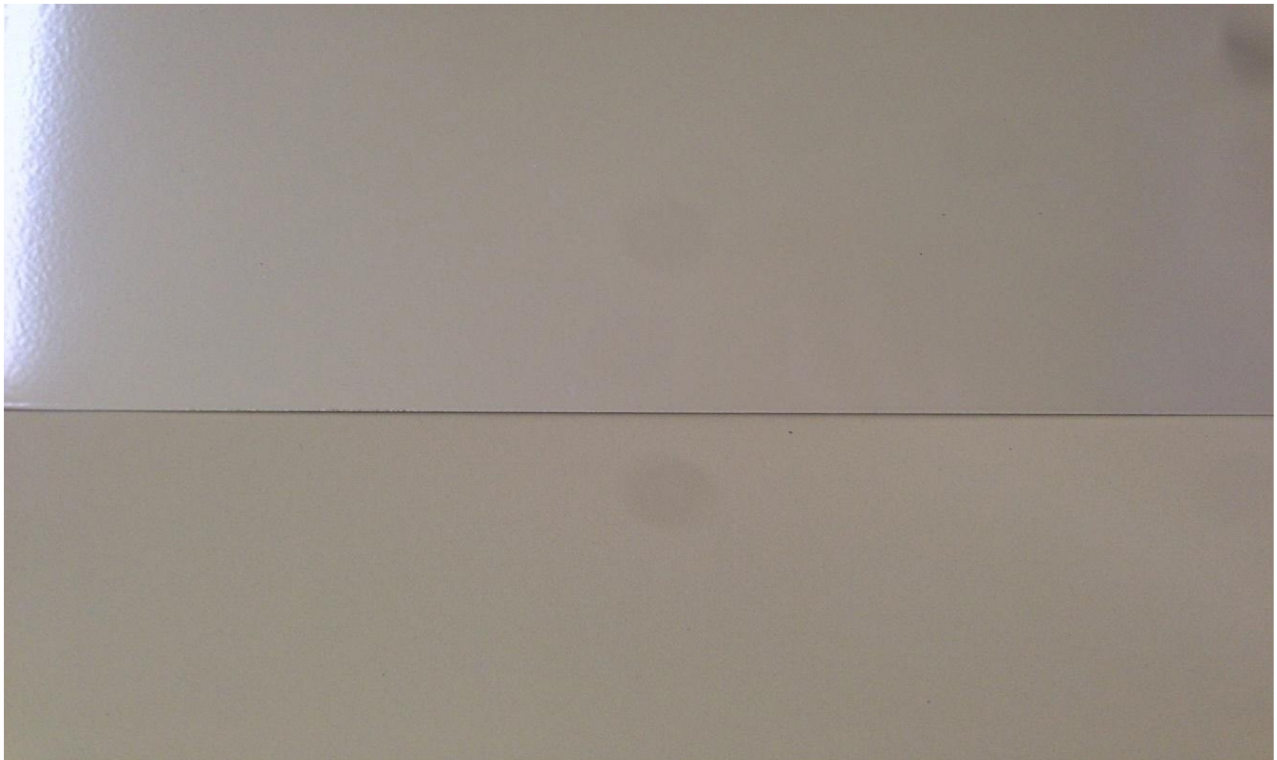


Figure 5 – Smooth Matt Effect

N.B. – It is not possible to obtain a super matt colour because, once that a certain percentage of additive is reached, the gloss reduction stabilises.



Figure 6 – Initial gloss value



Figure 7 – Final gloss value

“FromTo” SERIES

Special Additives for coating powders

4. AVAILABLE BOXES

Boxes from **1kg** to **25kg** are available for this series. By way of exception, due to the peculiarity of this product, it is also possible to order **15kg** or **20 kg** boxes.



Dedicated Marketing presentation:

- MRK-017-0127



GICOLOR SRL

Sede legale: Viale del Lavoro, 5 - 37040 Arcole (VR)

Sede operativa: Via Tagliamento, 4 - 36056 Belvedere di Tezze sul Brenta (VI)

Tel. +39 0424 560208 - Fax +39 0424 564601

