

BLIZZARD-001 SERIES

Special Surface Powder Coating



Information:

1. TECHNICAL INFORMATION

2. TESTS

3. PRODUCT AVAILABILITY

4. MARKETING MATERIAL

BLIZZARD-001 SERIES

Special Surface Powder Coating

1. TECHNICAL INFORMATION

● PRODUCT FEATURES

The main feature of the *BLIZZARD* series powder coating is the surface effect. Special additives create the outstanding and unique effect, called “*Blizzard*”.

● TECHNICAL DATA

CHEMICAL NATURE	MODIFIED POLYESTER
Gloss	1.4
Yield in surface/mass	10,42 m ² /kg
Specific weight	1,27±0,03 g/cm ³

● APPLICATION AND CURING CYCLE

To take full advantage of the amazing effect of the “*Blizzard*” powder, it is greatly recommended to apply two coats:

FIRST LAYER: Any *GiColor* polyester powder coating suitable for double layer powder coating
[Identification Code: X.XXX.XXXX-YY**G**]

- Application methods, curing cycle and resistance class are specified on the technical data sheet of the chosen powder coating.

Recommended Thickness: 60 – 80 µm

SECOND LAYER: *Blizzard-001* [Transparent Color]

Available for corona charging.

Curing cycle:

- 25 minutes at 190°C (metal temperature) – 25' x 342°F
- **20 minutes at 200°C (metal temperature) – 20' x 360°F**
- 15 minutes at 210°C (metal temperature) – 15' x 378°F

Recommended Thickness: 60 – 80 µm

N.B. THE COLOUR IS GIVEN BY THE FIRST LAYER OF POWDER COATING SINCE THE BLIZZARD-001 IS TRANSPARENT

● MECHANICAL PROPERTIES

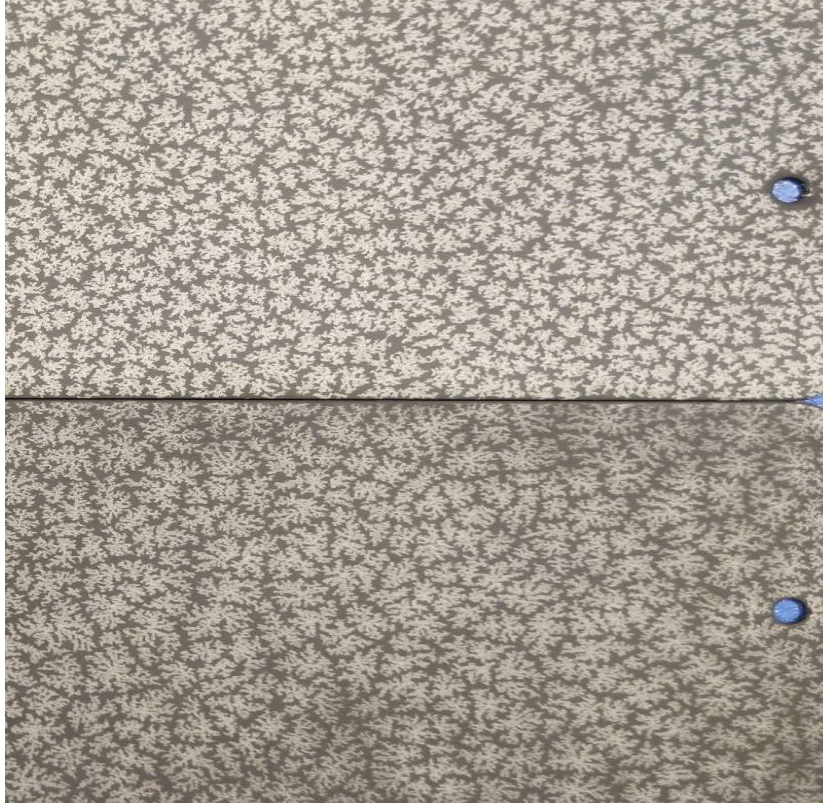
Test	Standard Reference	Result
Buchholz	ISO 2815	ok
Adhesion	ISO 2409	ok
Gloss	ISO 2813	ok

SERIES BLIZZARD-001

Special Surface Powder Coating

2.TEST

- **THICKNESS**



Thickness Measured: 250 μm .

Used too much *Blizzard* powder.

Thickness Measured: 160 μm .

Correct usage of *Blizzard* powder.

Figure 1: Example of discrepancy caused by the different quantity of *Blizzard* powder used.

To obtain a uniform result, the thickness should be around 60-80 μm . An excessive amount of powder coating applied will cause an increase of the *Blizzard* effect, which results in a whiter colour.

The image of **figure 1** clearly shows this effect: even though the same powder was used to paint the 2 sample sheets, the one on the top results to be whiter than the other below because of the excessive thickness of *Blizzard-001* powder coating.

CONCLUSION

The excessive thickness of *Blizzard-001* powder coating can cause a “whitening” effect. We recommend the utmost attention during the coating process.

SERIE BLIZZARD-001

Special Surface Powder Coating

3. PRODUCT AVAILABILITY

- **PACKAGING**



Cardboard packaging: 25kg net weight – smaller boxes are available on request.

3. MARKETING MATERIAL

Dedicated marketing material



GICOLOR SRL

Registered Office: Viale del Lavoro, 5 - 37040 Arcole (VR)

Operational Headquarter: Via Tagliamento, 4 - 36056 Belvedere di Tezze sul Brenta (VI)

Tel. +39 0424 560208 - Fax +39 0424 564601

